

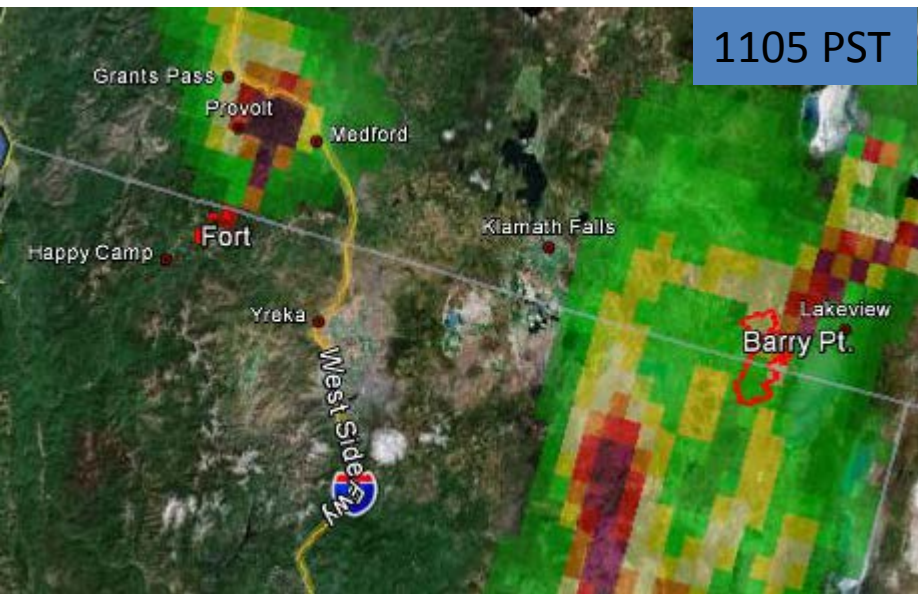
0450 PST



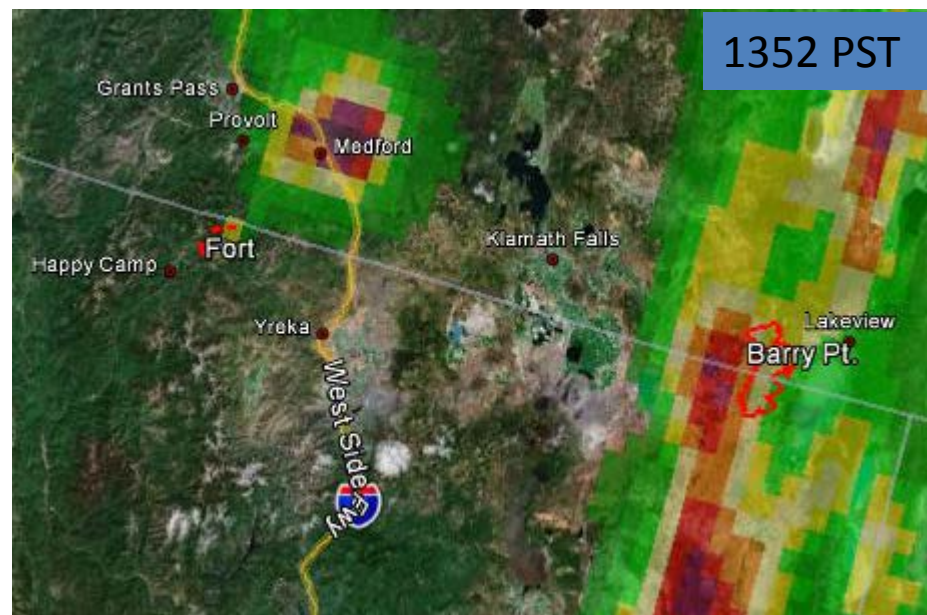
0758 PST



1105 PST

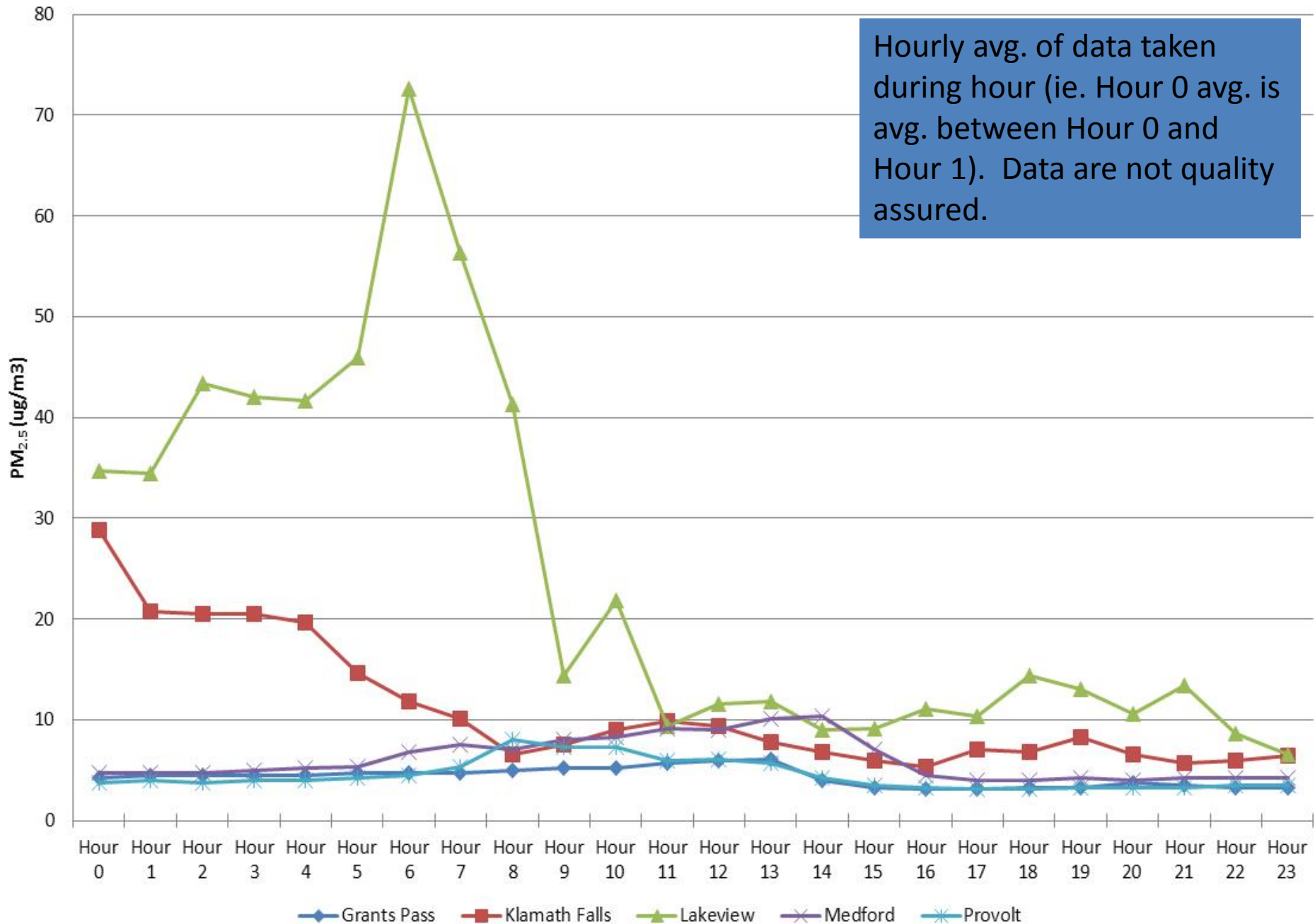


1352 PST



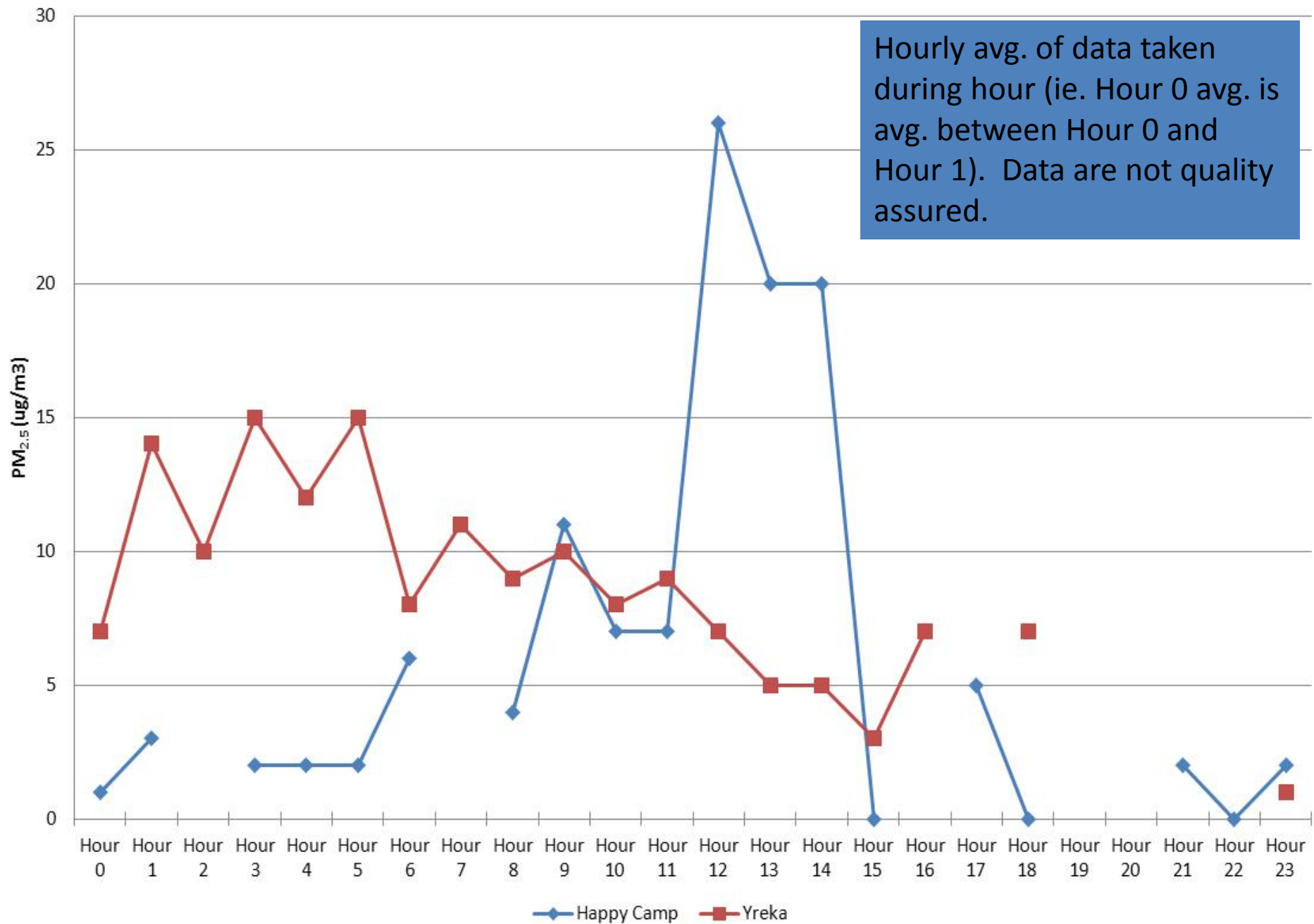
# 18-Aug-12 (All data in PST)

Hourly avg. of data taken during hour (ie. Hour 0 avg. is avg. between Hour 0 and Hour 1). Data are not quality assured.





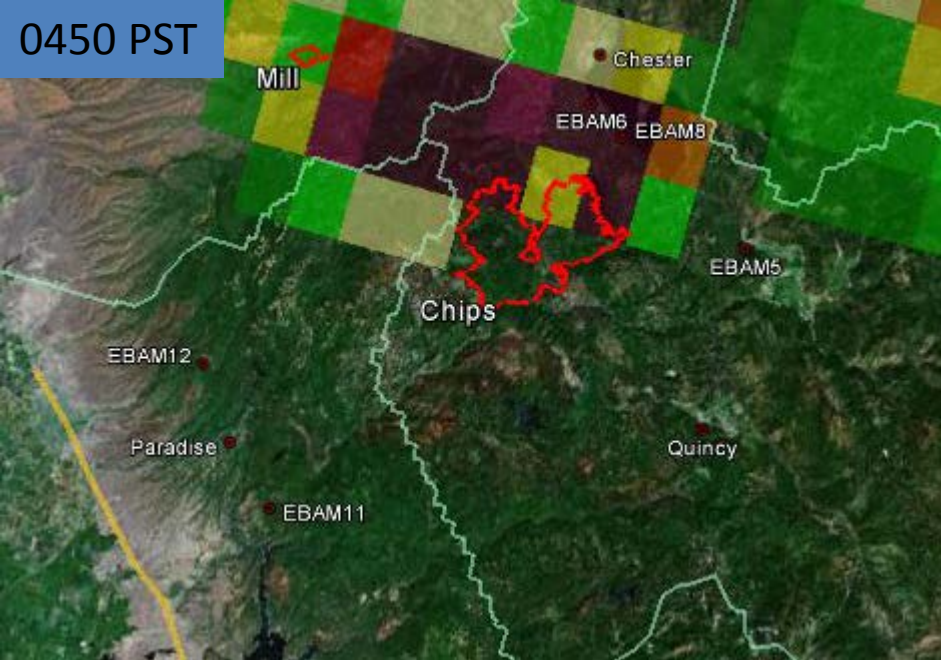
# 18-Aug-12 (All data in PST)



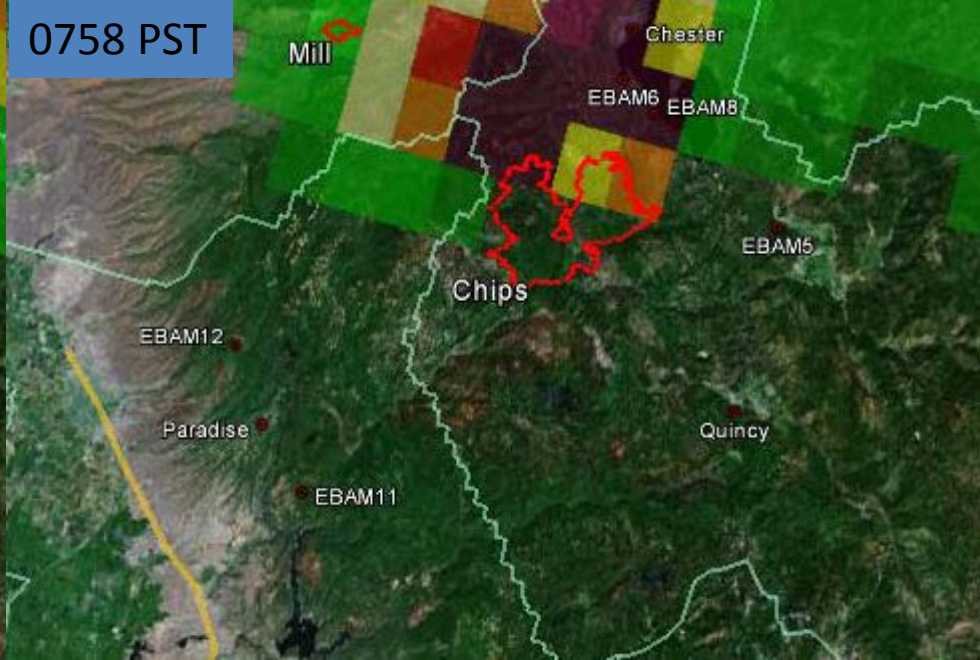
# Synopsis

- Monitoring data shows increased concentrations in Lakeview in the early morning hours peaking during the 0600 hour and falling by the 0900 hour.
- Modeling forecasts Lakeview impacts beginning around 0600 and lasting until around 1000.
- Modeling also forecasts mid-morning impacts to Medford, Grants Pass, and Provolt which do not occur.
- Significant impacts were not forecasted for Happy Camp or Yreka.

0450 PST



0758 PST



1105 PST

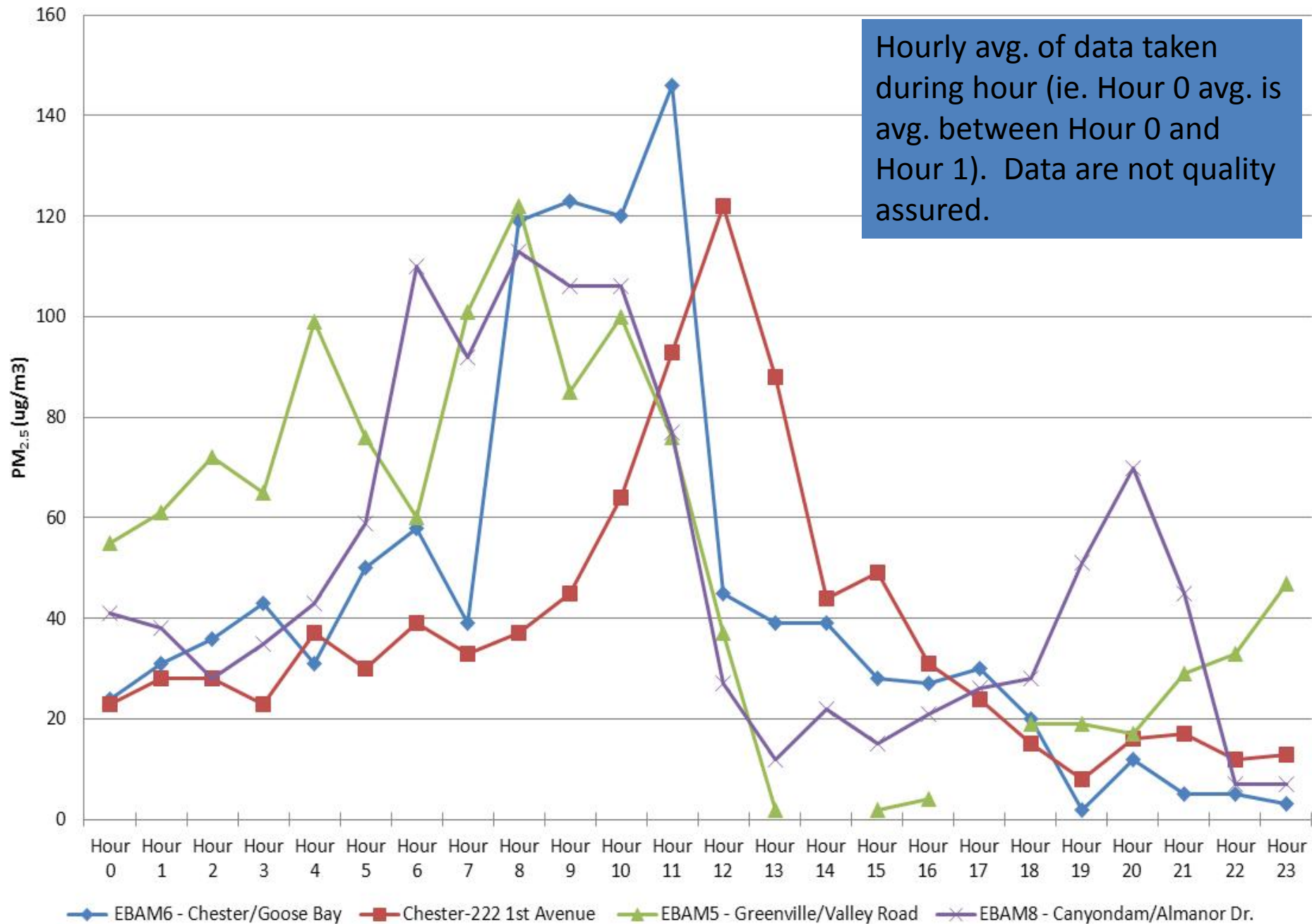


1352 PST



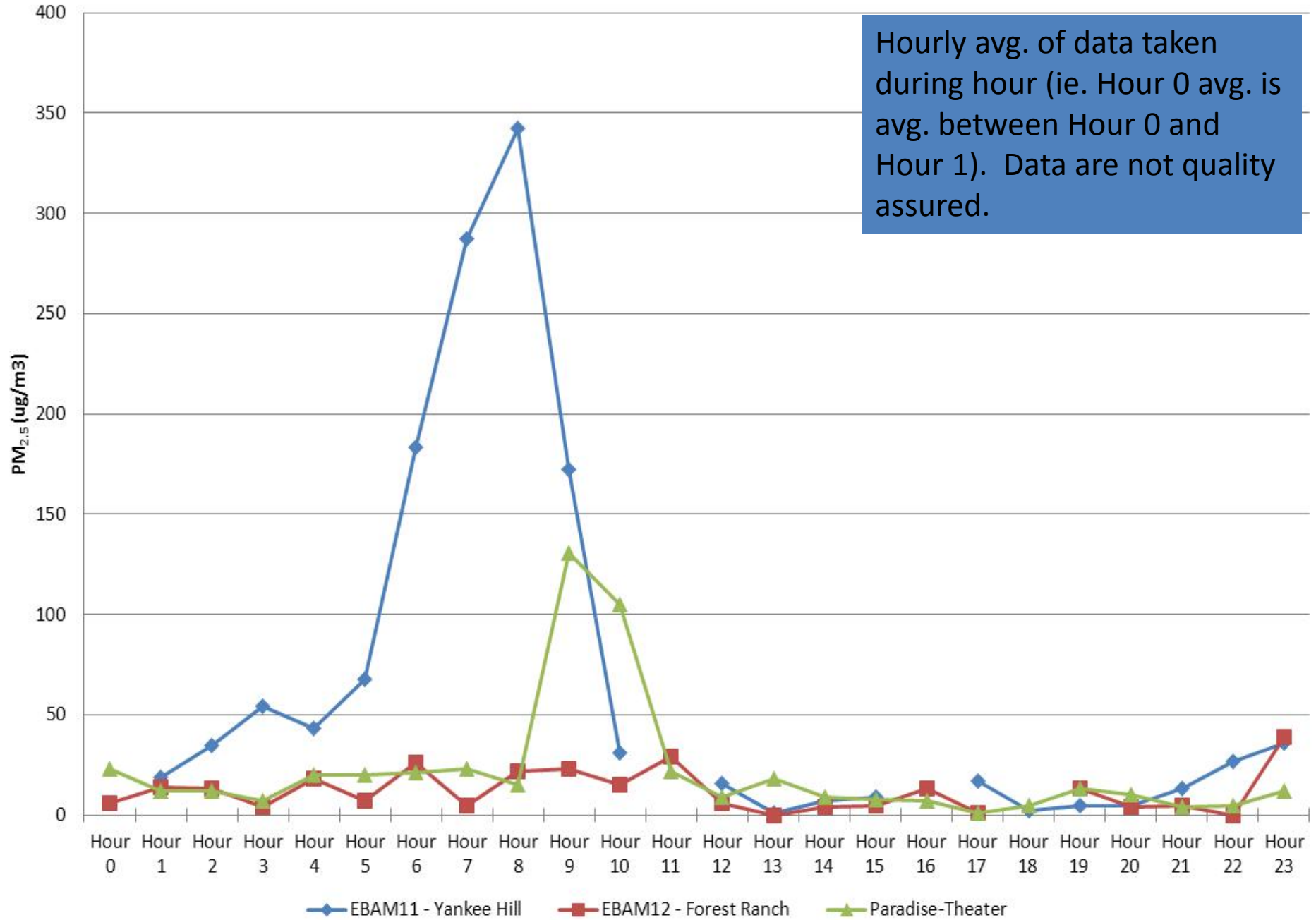


# 18-Aug-12 (All data in PST)

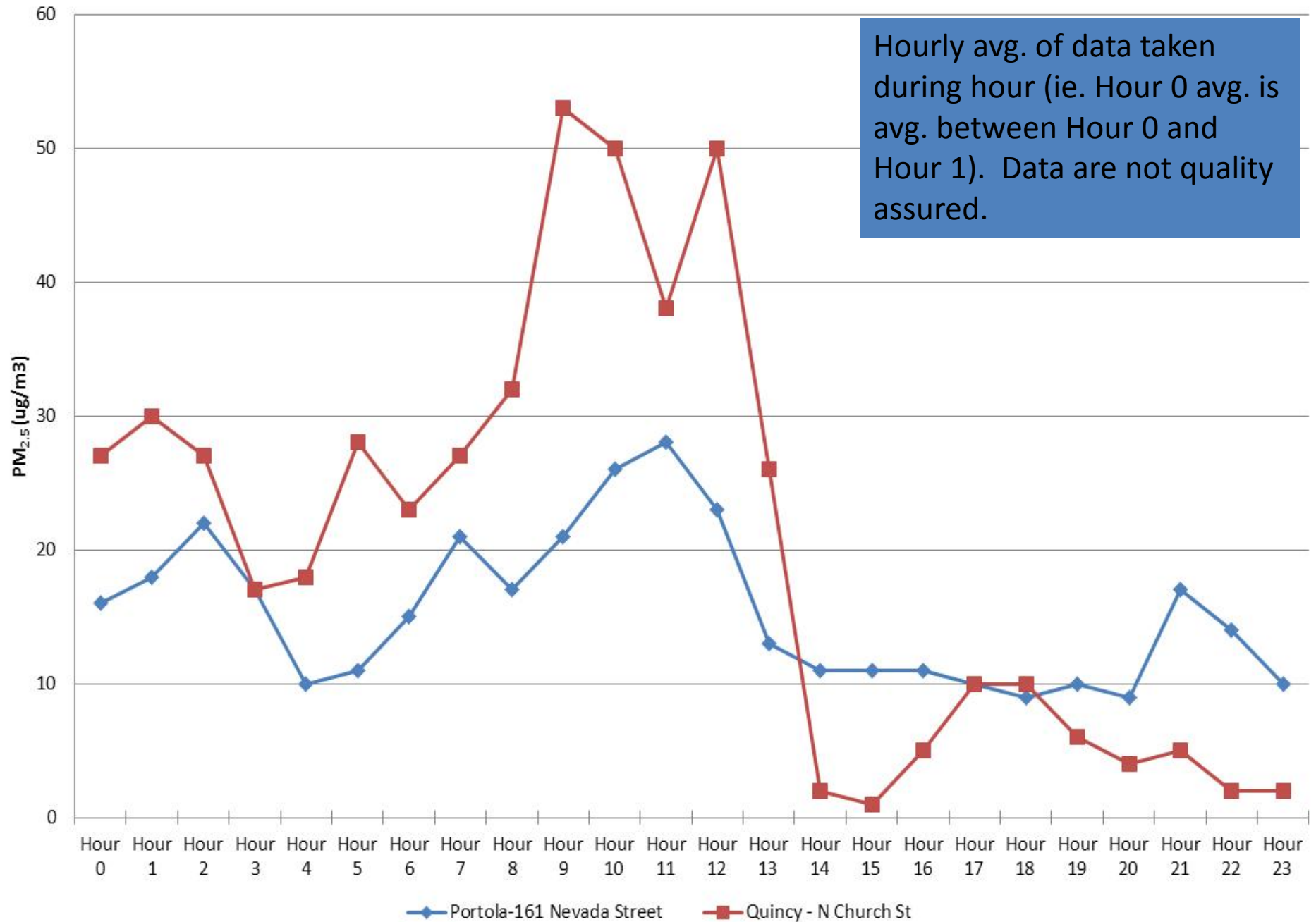


# 18-Aug-12 (All data in PST)

Hourly avg. of data taken during hour (ie. Hour 0 avg. is avg. between Hour 0 and Hour 1). Data are not quality assured.



# 18-Aug-12 (All data in PST)





# Synopsis

- Modeling did not forecast impacts to the Feather Valley monitors (Paradise, EBAM11, and EBAM 12). But increased concentrations were monitored at the two EBAMs during the morning hours.
- High concentrations continued to be seen by the monitors in the Lake Almanor area (Chester, EBAM6, EBAM8) and the Greenville area (EBAM5).
- The monitors in Quincy and Portola were not forecasted to see wildfire smoke but may have received some down drainage impacts particularly at Quincy.