

What do storytelling, soils data standards, and research data lifecycle have in common?

# ESIP Agriculture and Climate Cluster!

Co-chairs

Bill Teng (William.L.Teng@nasa.gov)  
Nancy Hoebelheinrich (nhoebel@kmotifs.com)



A simple one-sentence, fill-in-the-blanks template can help you identify a story structure

(main characters)

ESIP  
Ag &  
Climate  
Cluster

U.S. Climate  
Resilience  
Toolkit

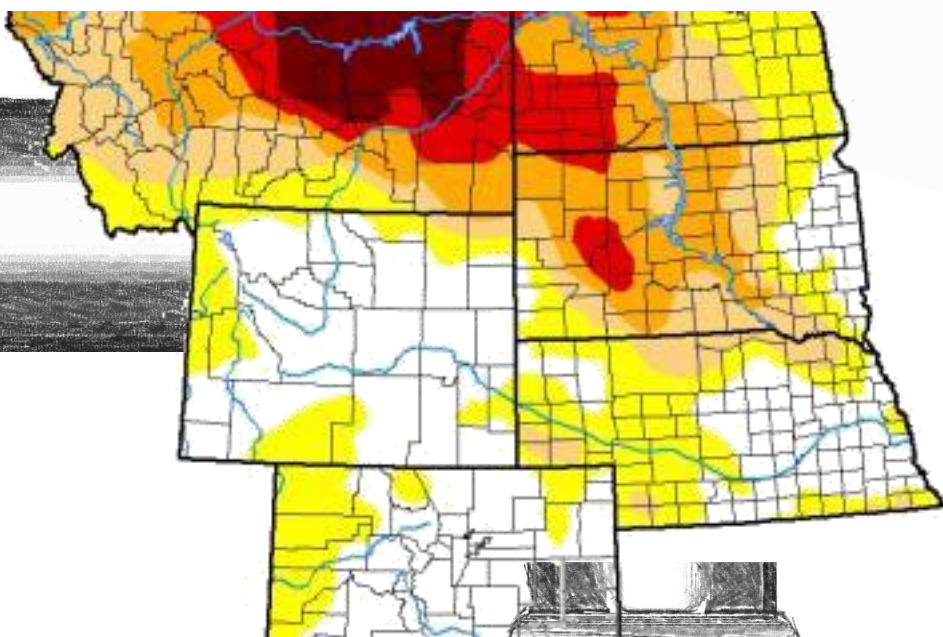


AND

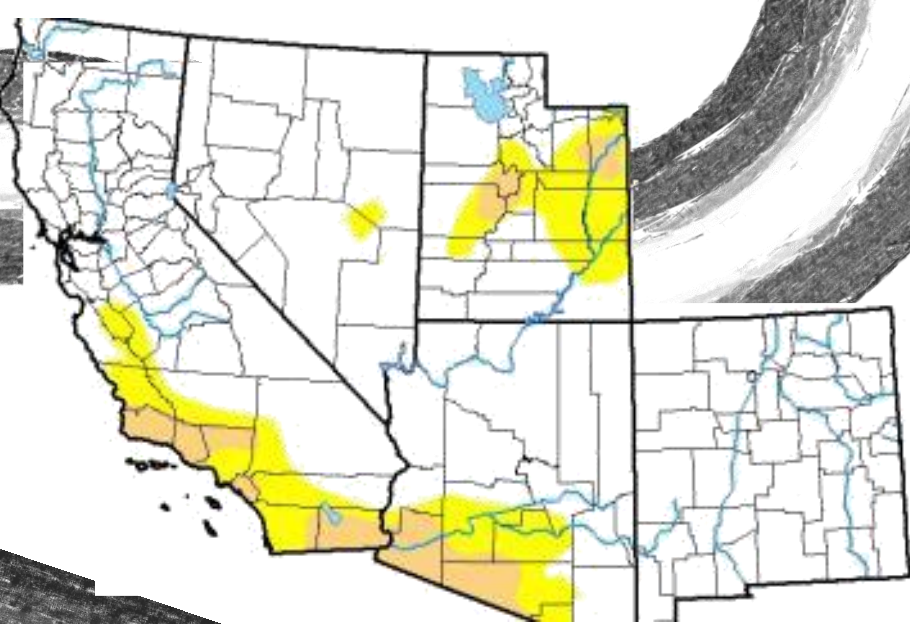
Climate Change  
Impacts

USDA Climate Hubs  
U.S. DEPARTMENT OF AGRICULTURE

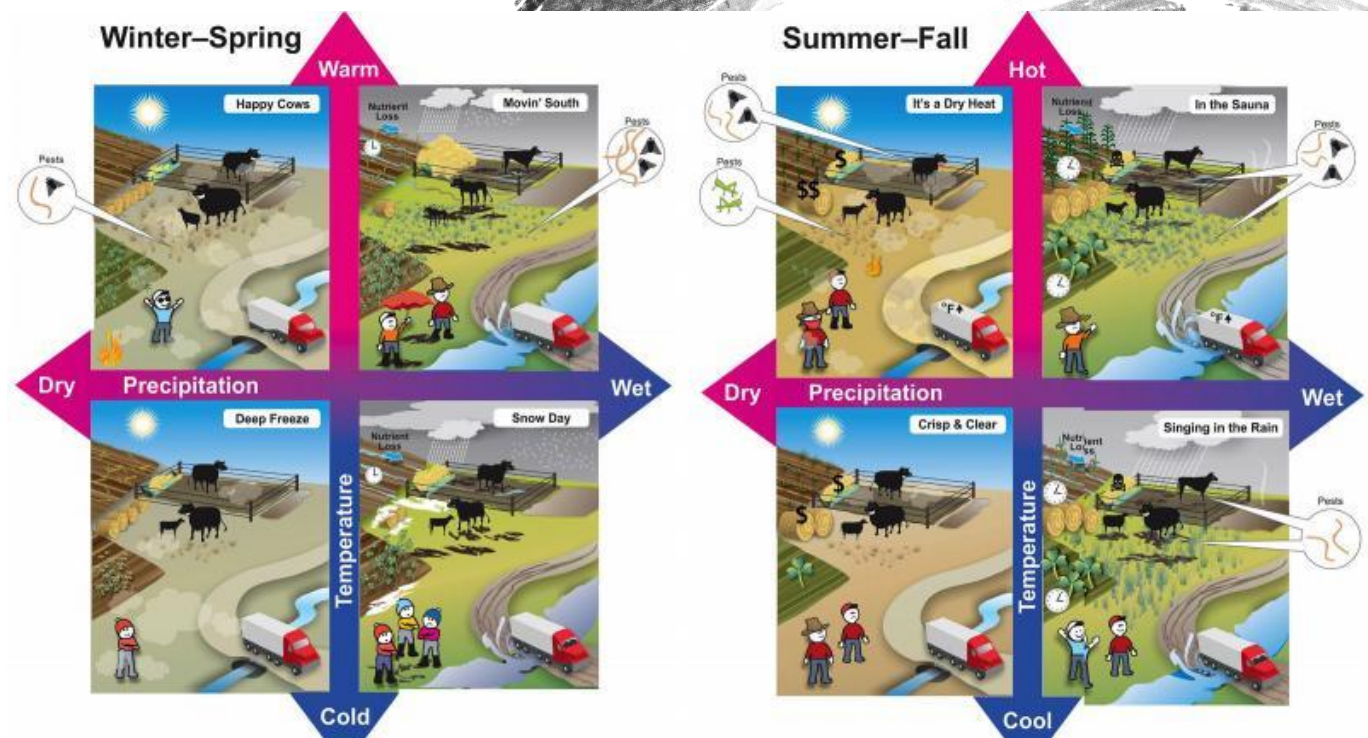
Northern Plains  
Climate Hub



Southwest  
Climate Hub



(Goal)



Scenario planning to promote resilience in beef production

BUT

Soil  
Erosion

(Obstacle)

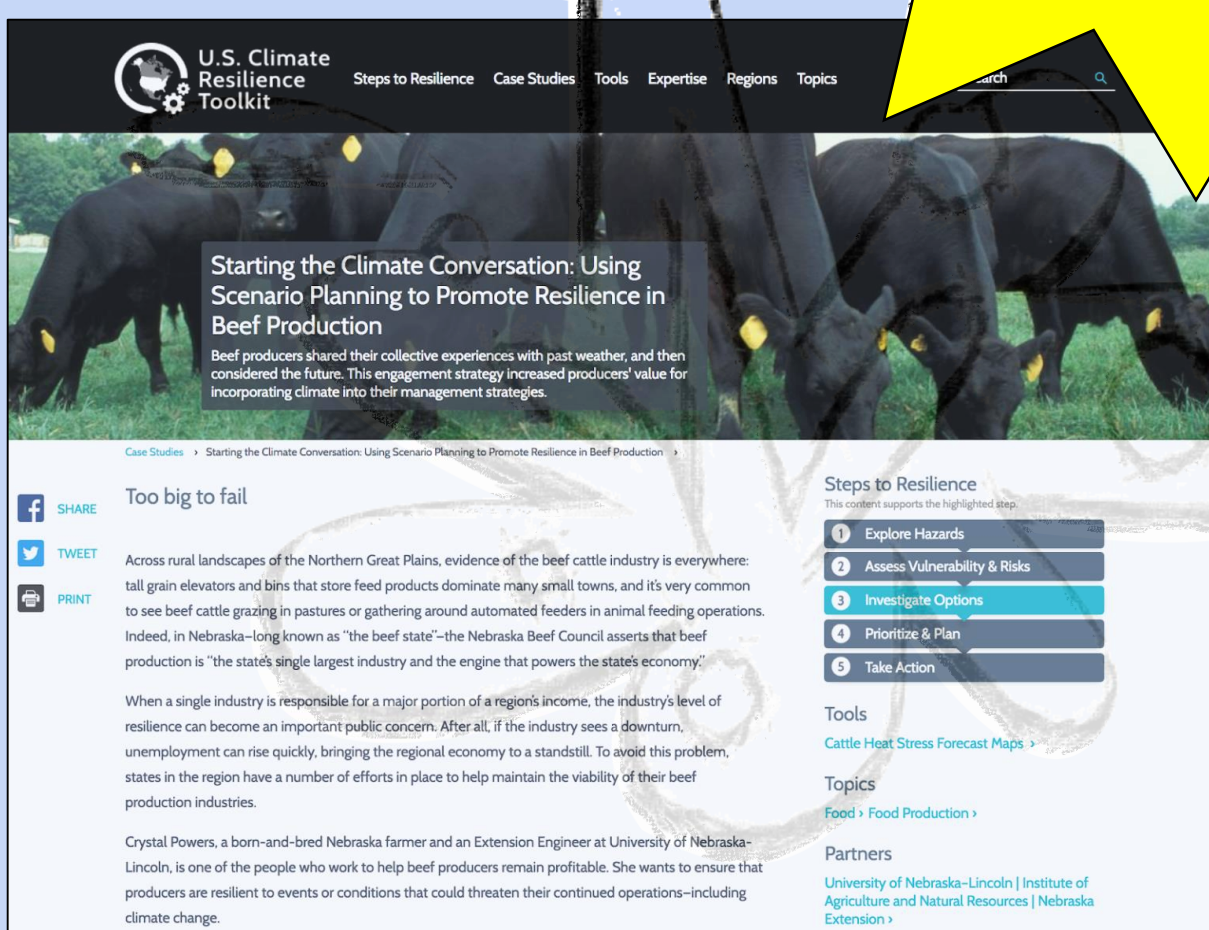
THEREFORE

(Solution)

2019 ESIP Summer Meeting:  
Workshop on Soils Data  
Standards  
July 18, 2019  
Tacoma, WA

2019 ESIP Winter Meeting:  
Session on "Soils data integration challenges  
throughout the research lifecycle"

Story structure paraphrased from  
Randy Olsen via Andy Revkin



**ESIP**

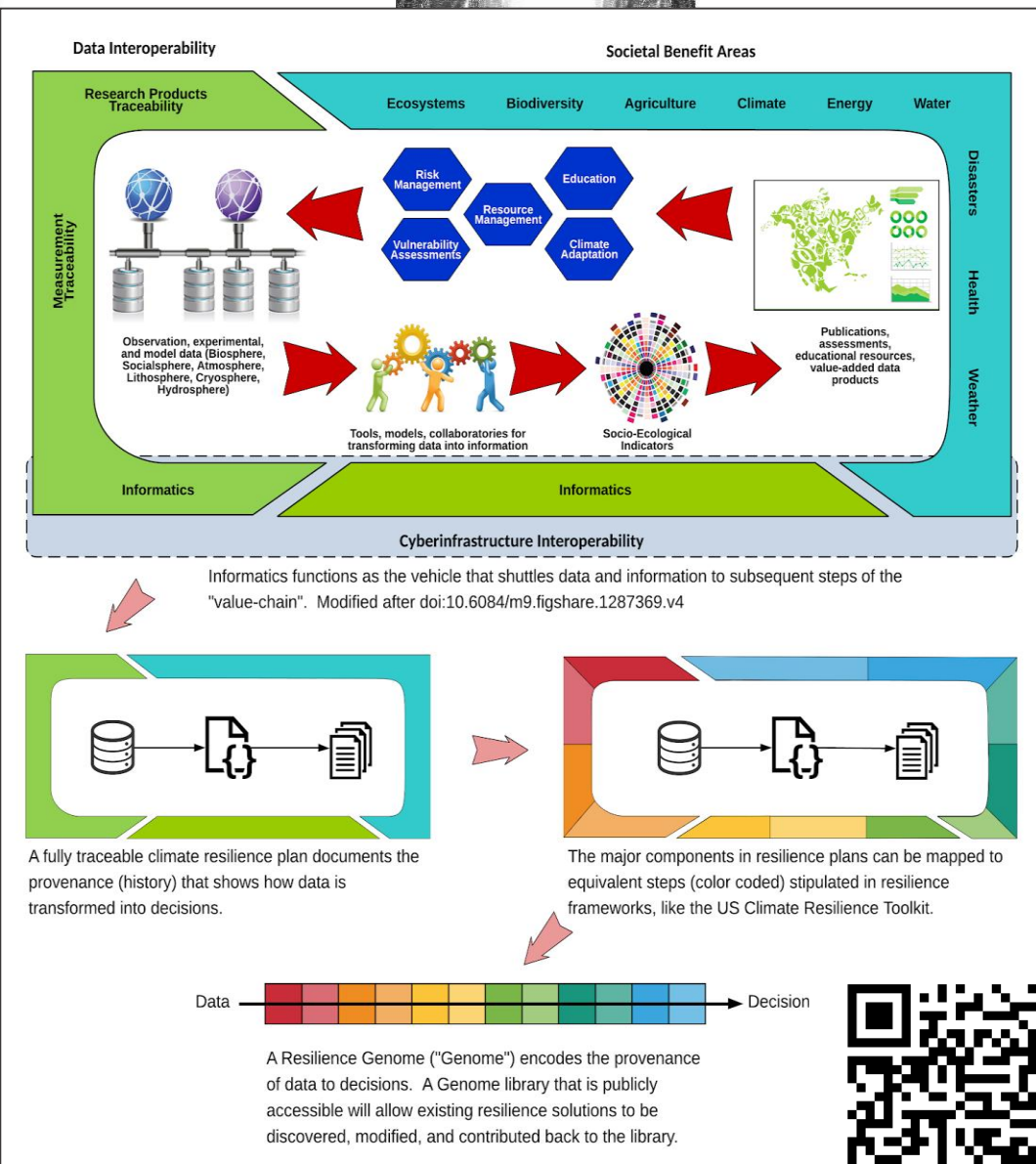
**Introduction**

Arika Virapongse  
Principal, Middle Path EcoSolutions  
Webinar series coordinator, ESIP  
[av@midthepathco.com](mailto:av@midthepathco.com)

The "pipeline" of Earth science data to climate resilience and its value for real-world decision making

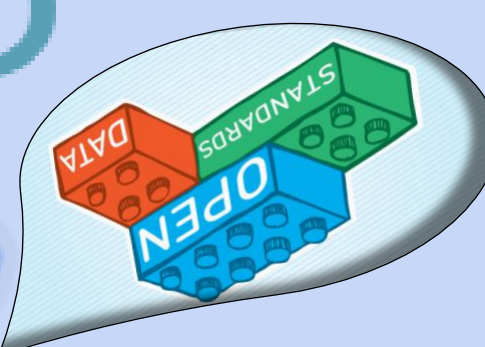
October 2, 2018 | Webinar #4

[www.esipfed.org](http://www.esipfed.org) @ESIPfed ESIP is supported by and 110+ members



Data to decisions  
provenance: ESIP Lab  
project to encode  
provenance for CRT case  
studies

Midwest  
Floods



Poster design: Eleanor Davis,  
University of South Carolina, 2018-  
2019 ESIP Community Fellow